

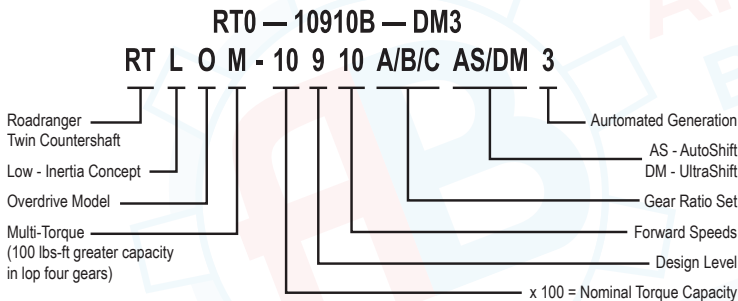
Fuller® Transmission Identification

Nomenclature - Automated

New Nomenclature System Components

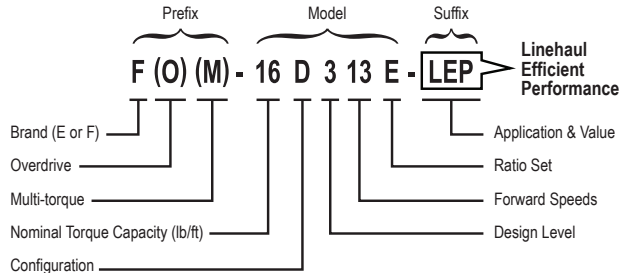
- Prefix
 - F for Fuller®: All medium-duty and heavy-duty UltraShift® products in North America and Australia
 - E for Eaton: All other products (including UltraShift outside North America and Australia)
 - Parenthetical letters such as (O) and (M) indicate provisions for Overdrive, Multi-Torque and other configurations
- Model Designator
 - Nominal Torque Capacity (lb/ft for North America and Australia)
 - Configuration: alpha designator A,B,C,D ... for launch device and other system components
 - Design Level: numeric designator describes mechanical and electronic design levels
 - Gear Ratio Set: alpha designator (unchanged)
 - 3-Letter Suffix: denotes application and value

Heavy-Duty Automated Example



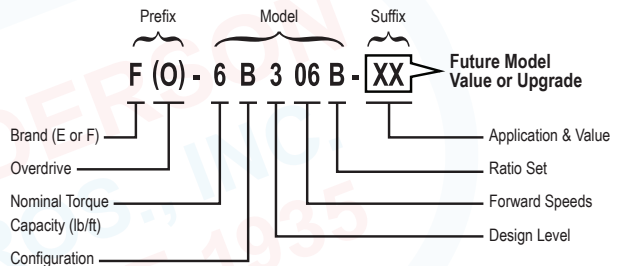
Heavy-Duty UltraShift Example

Example: Fuller UltraShift Linehaul Efficient Performance (LEP)



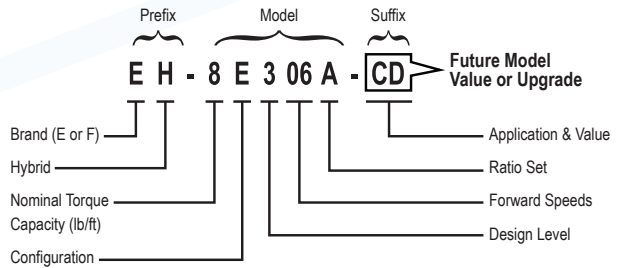
Medium-Duty UltraShift Example

Example: Fuller UltraShift XX (for future use as new products and significant upgrades are introduced)



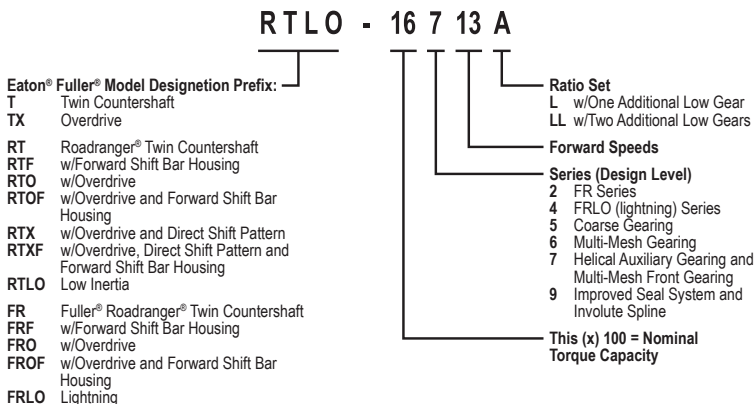
Hybrid Power System Example

Hybrid Power System Example



Nomenclature - Manual

Heavy-Duty Example



Medium-Duty Example



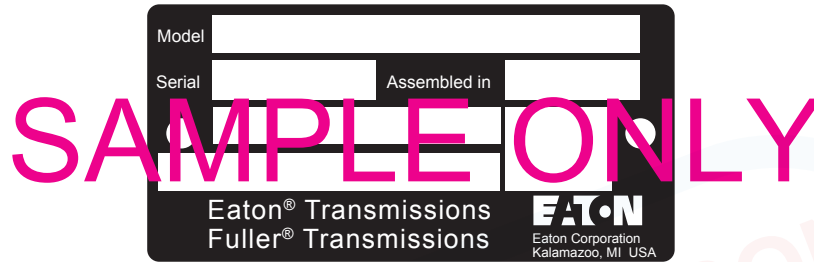
Fuller Transmission Identification Tag

All Fuller Advantage Automated Transmissions are supplied with component identification tags. All tags are located on the bottom, center of the transmission.

Care should be taken not to damage the identification tag during the installation process.

Note: When the OEM is developing transmission trim line cradles, please take the location of the serial tag into account to avoid damaging the serial tag.

Do not remove the identification tag.



Product Identification

Nomenclature

Fuller Advantage Automated Transmissions

Eaton Cummins Strategic Alliance Package

